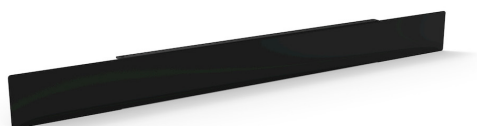


BASE CLOSURE



The photo is used only for illustrative and non-exhaustive purpose

| ART. | EAN | W [mm] | D [mm] | H [mm] | Net weight [kg] |
|-----------------|---------------|--------|--------|--------|-----------------|
| M60Z10021000007 | 8059340867301 | 1184 | 46 | 95 | 2,3 |

| Dimensions | Width [EH] | 64 |
|------------|---------------------|------|
| | Overall height [mm] | 95 |
| | Overall width [mm] | 1184 |
| | Overall depth [mm] | 46 |

| Property | Colour | Black |
|----------|----------|--------|
| | RAL | 9005 |
| | Painting | Powder |

| Sales specifications | Multiple order [NR] | 1 |
|----------------------|------------------------------------|-------------|
| | Packaging type | Plastic bag |
| | Packaging width [mm] | 1184 |
| | Packaging depth [mm] | 46 |
| | Packaging height [mm] | 95 |
| | Gross weight [kg] | 2,3 |
| | Plastic weight [kg] | 0,037 |
| | Packaging volume [m ³] | 0,0052 |

Tolerances: dimensions $\pm 2\%$, weights $\pm 5\%$



INNOVATION
SINCE 1929.



FAMIS.r.l.

VIA STAZIONE ROSSANO, 13 – 36027 ROSÀ (VI) ITALY
TEL +39 0424 585455 – FAX +39 0424 585470
INFO@FAMISPA.COM

R.I. DI VICENZA, C.F. & P. IVA IT03498610249
CAPITALE SOCIALE EURO 100.000,00 INT. VERS.
CCIAA VI: R.E.A. N° 330190

Soggetta ad attività di direzione e coord. di C.I.M.M. s.p.a.

FAMI EXPORT DEPT.
TEL +39 0424 585455
FAX +39 0424 585472
EXPORT@FAMISPA.COM

WWW.FAMISPA.COM

STOREVAN
TEL +39 0424 585455
FAX +39 0424 585482
INFO@STOREVAN.IT

WWW.STOREVAN.COM