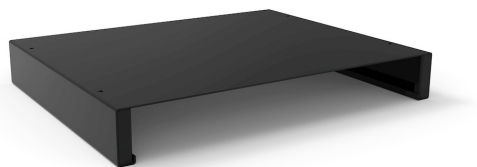


BASE FOR FORKLIFT AND PALLET TRUCK



The photo is used only for illustrative and non-exhaustive purpose

ART.	EAN	W [mm]	D [mm]	H [mm]	Net weight [kg]
M32Z10010000007	8059340862702	712	569	100	13,5

Dimensions	Width [EH]	36
	Depth [EH]	27
	Overall height [mm]	100
	Overall width [mm]	712
	Overall depth [mm]	569

Technical data	Load capacity [kg]	3100
----------------	--------------------	------

Property	Colour	Black
	RAL	9005
	Fixing	Included
	Painting	Powder

Sales specifications	Multiple order [NR]	1
	Gross weight [kg]	14,0
	Wood weight [kg]	0,500

Tolerances: dimensions $\pm 2\%$, weights $\pm 5\%$



INNOVATION
SINCE 1929.



FAMIS.r.l.

VIA STAZIONE ROSSANO, 13 – 36027 ROSÀ (VI) ITALY
TEL +39 0424 585455 – FAX +39 0424 585470
INFO@FAMISPA.COM

R.I. DI VICENZA, C.F. & P. IVA IT03498610249
CAPITALE SOCIALE EURO 100.000,00 INT. VERS.
CCIAA VI: R.E.A. N° 330190

Soggetta ad attività di direzione e coord. di C.I.M.M. s.p.a.

FAMI EXPORT DEPT.
TEL +39 0424 585455
FAX +39 0424 585472
EXPORT@FAMISPA.COM

WWW.FAMISPA.COM

STOREVAN
TEL +39 0424 585455
FAX +39 0424 585482
INFO@STOREVAN.IT

WWW.STOREVAN.COM