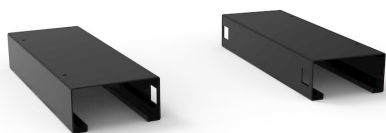


## PAIR OF BASES FOR FORKLIFT AND PALLET TRUCK



The photo is used only for illustrative and non-exhaustive purpose

ART.	EAN	W [mm]	D [mm]	H [mm]	Net weight [kg]
M03Z10020000007	8055719789458	200	722	100	15,8

Dimensions	Depth [EH]	36
	Overall height [mm]	100
	Overall width [mm]	200
	Overall depth [mm]	722

Technical data	Load capacity [kg]	3100
----------------	--------------------	------

Property	Colour	Black
	RAL	9005
	Fixing	Included
	Painting	Powder

Sales specifications	Multiple order [NR]	1
	Gross weight [kg]	16,3
	Wood weight [kg]	0,500

Tolerances: dimensions  $\pm 2\%$  | weights  $\pm 5\%$



INNOVATION  
SINCE 1929.



### FAMIS.r.l.

VIA STAZIONE ROSSANO, 13 – 36027 ROSÀ (VI) ITALY  
TEL +39 0424 585455 – FAX +39 0424 585470  
INFO@FAMISPA.COM

R.I. DI VICENZA, C.F. & P. IVA IT03498610249  
CAPITALE SOCIALE EURO 100.000,00 INT. VERS.  
CCIAA VI: R.E.A. N° 330190

Soggetta ad attività di direzione e coord. di C.I.M.M. s.p.a.

FAMI EXPORT DEPT.  
TEL +39 0424 585455  
FAX +39 0424 585472  
EXPORT@FAMISPA.COM

[WWW.FAMISPA.COM](http://WWW.FAMISPA.COM)

STOREVAN  
TEL +39 0424 585455  
FAX +39 0424 585482  
INFO@STOREVAN.IT

[WWW.STOREVAN.COM](http://WWW.STOREVAN.COM)