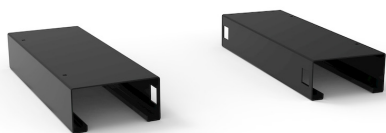


PAIR OF BASES FOR FORKLIFT AND PALLET TRUCK



The photo is used only for illustrative and non-exhaustive purpose

| ART. | EAN | W [mm] | D [mm] | H [mm] | Net weight [kg] |
|-----------------|---------------|--------|--------|--------|-----------------|
| M02Z10020000007 | 8055719789441 | 200 | 569 | 100 | 12,4 |

| | | |
|------------|---------------------|-----|
| Dimensions | Depth [EH] | 27 |
| | Overall height [mm] | 100 |
| | Overall width [mm] | 200 |
| | Overall depth [mm] | 569 |

| | | |
|----------------|--------------------|------|
| Technical data | Load capacity [kg] | 3100 |
|----------------|--------------------|------|

| | | |
|----------|----------|----------|
| Property | Colour | Black |
| | RAL | 9005 |
| | Fixing | Included |
| | Painting | Powder |

| | | |
|----------------------|---------------------|-------|
| Sales specifications | Multiple order [NR] | 1 |
| | Gross weight [kg] | 12,9 |
| | Wood weight [kg] | 0,500 |

Tolerances: dimensions $\pm 2\%$ | weights $\pm 5\%$



INNOVATION
SINCE 1929.



FAMIS.r.l.

VIA STAZIONE ROSSANO, 13 – 36027 ROSÀ (VI) ITALY
TEL +39 0424 585455 – FAX +39 0424 585470
INFO@FAMISPA.COM

R.I. DI VICENZA, C.F. & P. IVA IT03498610249
CAPITALE SOCIALE EURO 100.000,00 INT. VERS.
CCIAA VI: R.E.A. N° 330190

Soggetta ad attività di direzione e coord. di C.I.M.M. s.p.a.

FAMI EXPORT DEPT.
TEL +39 0424 585455
FAX +39 0424 585472
EXPORT@FAMISPA.COM

WWW.FAMISPA.COM

STOREVAN
TEL +39 0424 585455
FAX +39 0424 585482
INFO@STOREVAN.IT

WWW.STOREVAN.COM