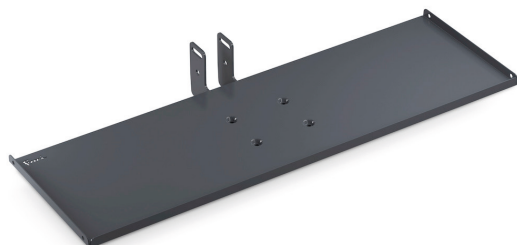


## INCLINED KEYBOARD AND MOUSE TRAY



The photo is used only for illustrative and non-exhaustive purpose

ART.	EAN	W [mm]	D [mm]	H [mm]	Net weight [kg]
FBL74210039	8052693946099	649	268	88	2,3

Dimensions	Overall height [mm]	88
	Overall width [mm]	649
	Overall depth [mm]	268
	Useful width [mm]	647
	Useful depth [mm]	208

Property	Colour	Anthracite grey
	RAL	7016
	Fixing	Included
	Painting	Powder

Sales specifications	Multiple order [NR]	1
	Packaging type	Cardboard box
	Packaging width [mm]	695
	Packaging depth [mm]	255
	Packaging height [mm]	120
	Gross weight [kg]	2,7
	Cardboard weight [kg]	0,414
	Plastic weight [kg]	0,005
Packaging volume [m <sup>3</sup> ]	0,0213	

Tolerances: dimensions ±2% | weights ±5%



INNOVATION  
SINCE 1929.



Company certificated ISO 9001

### FAMIS.r.l.

VIA STAZIONE ROSSANO, 13 – 36027 ROSÀ (VI) ITALY  
TEL +39 0424 585455 – FAX +39 0424 585470  
INFO@FAMISPA.COM

R.I. DI VICENZA, C.F. & P. IVA IT03498610249  
CAPITALE SOCIALE EURO 100.000,00 INT. VERS.  
CCIAA VI: R.E.A. N° 330190

Soggetta ad attività di direzione e coord. di C.I.M.M. S.p.A.

FAMI EXPORT DEPT.  
TEL +39 0424 585455  
FAX +39 0424 585472  
EXPORT@FAMISPA.COM

[WWW.FAMISPA.COM](http://WWW.FAMISPA.COM)

STOREVAN  
TEL +39 0424 585455  
FAX +39 0424 585482  
INFO@STOREVAN.IT

[WWW.STOREVAN.COM](http://WWW.STOREVAN.COM)