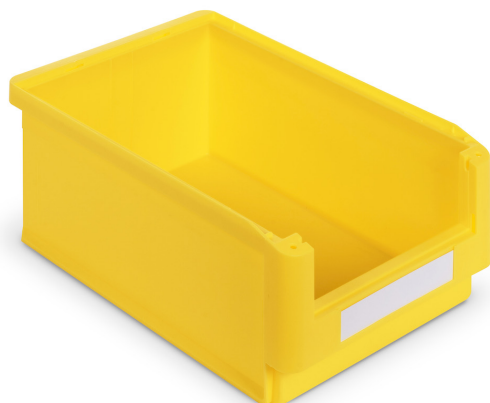


PICKING BOX CLASSIC POLYPROPYLENE BIN SIZE 4



The photo is used only for illustrative and non-exhaustive purpose

| ART. | EAN | W [mm] | D [mm] | H [mm] | Net weight [kg] |
|-----------------|---------------|--------|--------|--------|-----------------|
| FAXPB0004L0511Z | 8052693263684 | 313 | 500 | 200 | 1,5 |

| Dimensions | Overall height [mm] | 200 |
|-------------------|---------------------|-----|
| | Label height [mm] | 40 |
| | Overall width [mm] | 313 |
| | Label width [mm] | 117 |
| | Overall depth [mm] | 500 |
| | Measure | 4 |
| | Useful height [mm] | 186 |
| | Opening height [mm] | 84 |
| | Useful width [mm] | 278 |
| | Opening width [mm] | 241 |
| Useful depth [mm] | 445 | |

| Technical data | Capacity [L] | 24 |
|----------------|-----------------------------|---------------|
| | Material | Polypropylene |
| | Load capacity [kg] | 35 |
| | Stack load [kg] | 180 |
| | Temperature resistance [°C] | -20/+80 |
| | Stackability | Yes |

| Property | Colour | Zinc yellow |
|----------|--------|-------------|
| | Base | Solid |

Tolerances: dimensions ±2% | weights ±5%



INNOVATION
SINCE 1929.



Company certificated ISO 9001

FAMIS.r.l.

VIA STAZIONE ROSSANO, 13 – 36027 ROSÀ (VI) ITALY
 TEL +39 0424 585455 – FAX +39 0424 585470
 INFO@FAMISPA.COM
 R.I. DI VICENZA, C.F. & P. IVA IT03498610249
 CAPITALE SOCIALE EURO 100.000,00 INT. VERS.
 CCIAA VI: R.E.A. N° 330190

Soggetta ad attività di direzione e coord. di C.I.M.M. S.p.A.

FAMI EXPORT DEPT.
 TEL +39 0424 585455
 FAX +39 0424 585472
 EXPORT@FAMISPA.COM

WWW.FAMISPA.COM

STOREVAN
 TEL +39 0424 585455
 FAX +39 0424 585482
 INFO@STOREVAN.IT

WWW.STOREVAN.COM

| | | |
|-----------------------------|---|-------------------|
| Sales specifications | Multiple order [NR] | 6 |
| | Packaging type | Without packaging |
| | Packaging width [mm] | 315 |
| | Packaging depth [mm] | 500 |
| | Packaging height [mm] | 1200 |
| | Gross weight [kg] | 1,5 |
| | Packaging volume [m³] | 0,0315 |

Tolerances: dimensions ±2% | weights ±5%



INNOVATION
SINCE 1929.



Company certificated ISO 9001

FAMIS.r.l.

VIA STAZIONE ROSSANO, 13 – 36027 ROSÀ (VI) ITALY
 TEL +39 0424 585455 – FAX +39 0424 585470
 INFO@FAMISPA.COM
 R.I. DI VICENZA, C.F. & P. IVA IT03498610249
 CAPITALE SOCIALE EURO 100.000,00 INT. VERS.
 CCIAA VI: R.E.A. N° 330190
 Soggetta ad attività di direzione e coord. di C.I.M.M. S.p.A.

FAMI EXPORT DEPT.
 TEL +39 0424 585455
 FAX +39 0424 585472
 EXPORT@FAMISPA.COM

WWW.FAMISPA.COM

STOREVAN
 TEL +39 0424 585455
 FAX +39 0424 585482
 INFO@STOREVAN.IT

WWW.STOREVAN.COM