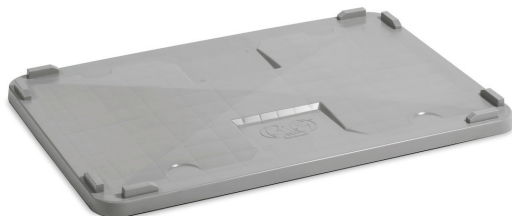


LID FOR CONTAINER



The photo is used only for illustrative and non-exhaustive purpose

ART.	EAN	W [mm]	D [mm]	H [mm]	Net weight [kg]
FAX1C01425BF001	8052693946235	1040	640	50	3,2

Dimensions	Overall height [mm]	50
	Overall width [mm]	1040
	Overall depth [mm]	640

Technical data	Material	HDPE
----------------	----------	------

Property	Colour	Darkgrey
----------	--------	----------

Sales specifications	Multiple order [NR]	1
	Packaging type	Without packaging
	Packaging width [mm]	1040
	Packaging depth [mm]	640
	Packaging height [mm]	50
	Gross weight [kg]	3,2
	Packaging volume [m ³]	0,0333

Tolerances: dimensions $\pm 2\%$ | weights $\pm 5\%$



INNOVATION
SINCE 1929.



Company certificated ISO 9001

FAMIS.r.l.

VIA STAZIONE ROSSANO, 13 – 36027 ROSÀ (VI) ITALY
 TEL +39 0424 585455 – FAX +39 0424 585470
 INFO@FAMISPA.COM
 R.I. DI VICENZA, C.F. & P. IVA IT03498610249
 CAPITALE SOCIALE EURO 100.000,00 INT. VERS.
 CCIAA VI: R.E.A. N° 330190
 Soggetta ad attività di direzione e coord. di C.I.M.M. S.p.A.

FAMI EXPORT DEPT.
 TEL +39 0424 585455
 FAX +39 0424 585472
 EXPORT@FAMISPA.COM

WWW.FAMISPA.COM

STOREVAN
 TEL +39 0424 585455
 FAX +39 0424 585482
 INFO@STOREVAN.IT

WWW.STOREVAN.COM