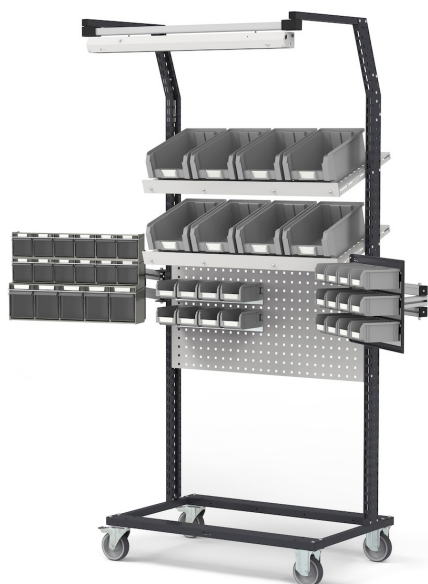


## TROLLEY WITH SWIVEL ARMS AND WHEELS



The photo is used only for illustrative and non-exhaustive purpose

ART.	EAN	W [mm]	D [mm]	H [mm]	Net weight [kg]
BINCART1014	8055719787409	2513	850	2267	65

Property	Colour	Anthracite grey
	RAL	7016

Sales specifications	Multiple order [NR]	1
	Assembly	Unassembled
	Gross weight [kg]	73
	Cardboard weight [kg]	7,8
	Plastic weight [kg]	0,269
	Packaging volume [m <sup>3</sup> ]	0,4082

Tolerances: dimensions ±2% | weights ±5%



INNOVATION  
SINCE 1929.



### FAMIS.r.l.

VIA STAZIONE ROSSANO, 13 – 36027 ROSÀ (VI) ITALY  
 TEL +39 0424 585455 – FAX +39 0424 585470  
 INFO@FAMISPA.COM  
 R.I. DI VICENZA, C.F. & P. IVA IT03498610249  
 CAPITALE SOCIALE EURO 100.000,00 INT. VERS.  
 CCIAA VI: R.E.A. N° 330190

Soggetta ad attività di direzione e coord. di C.I.M.M. s.p.a.

FAMI EXPORT DEPT.  
 TEL +39 0424 585455  
 FAX +39 0424 585472  
 EXPORT@FAMISPA.COM

[WWW.FAMISPA.COM](http://WWW.FAMISPA.COM)

STOREVAN  
 TEL +39 0424 585455  
 FAX +39 0424 585482  
 INFO@STOREVAN.IT

[WWW.STOREVAN.COM](http://WWW.STOREVAN.COM)

Made up of:

Quantity	ART.	Description
1	FBC15100039	Unassembled trolley without wheels
1	FBL98102039	Kit with 2 inclined supports with track
1	FBL99400108	Double lamp
3	FBL76170108	Perforated panel/shelf with box-stop edge
4	FBLIT027001	Kit with 2 Picking Box containers size 3A2
2	FBL74100039	Swivel arm for upright
2	FBL74120039	Monitor support plate with VESA standard
1	FBL74140039	Panel for Picking Box
5	FBLIT011000	Bar mount with 4 Picking Box containers size 1
1	FBL74150039	Panel for Visual Box
2	FAXVBCH00600001	Visual Box cabinet with 6 drawers H=112 mm
1	FAXVBCH00500001	Visual Box cabinet with 5 drawers H=164 mm
1	FKRU1252101	Non-marking synthetic rubber wheels kit Ø 125 mm

Tolerances: dimensions ±2% | weights ±5%



INNOVATION  
SINCE 1929.

**FAMIS.r.l.**

VIA STAZIONE ROSSANO, 13 – 36027 ROSÀ (VI) ITALY  
 TEL +39 0424 585455 – FAX +39 0424 585470  
 INFO@FAMISPA.COM  
 R.I. DI VICENZA, C.F. & P. IVA IT03498610249  
 CAPITALE SOCIALE EURO 100.000,00 INT. VERS.  
 CCIAA VI: R.E.A. N° 330190  
 Soggetta ad attività di direzione e coord. di C.I.M.M. s.p.a.

FAMI EXPORT DEPT.  
 TEL +39 0424 585455  
 FAX +39 0424 585472  
 EXPORT@FAMISPA.COM

[WWW.FAMISPA.COM](http://WWW.FAMISPA.COM)

STOREVAN  
 TEL +39 0424 585455  
 FAX +39 0424 585482  
 INFO@STOREVAN.IT

[WWW.STOREVAN.COM](http://WWW.STOREVAN.COM)