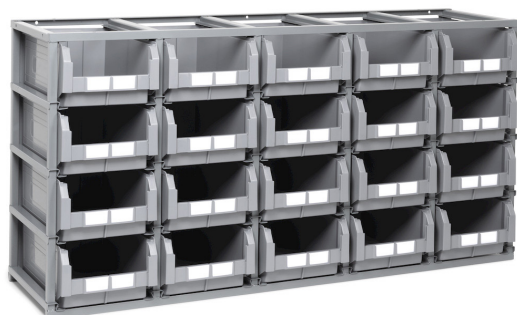


## SHELF WITH 20 CONTAINERS SIZE 4



The photo is used only for illustrative and non-exhaustive purpose

ART.	EAN	W [mm]	D [mm]	H [mm]	Net weight [kg]
FED40540101	8057711395552	1765	500	885	68

Dimensions	Overall height [mm]	885
	Overall width [mm]	1765
	Overall depth [mm]	500

Property	Colour	Dark grey
	RAL	7000
	Painting	Electrophoresis

Shelf	Commercial height [mm]	885
	Commercial width [mm]	1765
	Commercial depth [mm]	460
	Overall height [mm]	885
	Overall width [mm]	1765
	Overall depth [mm]	460
	Insertion useful height [mm]	206
	Compartment useful width [mm]	306
	Colour	Dark grey
	RAL	7000
	Painting	Electrophoresis
	Quantity [NR]	1

Tolerances: dimensions  $\pm 2\%$ ; weights  $\pm 5\%$



INNOVATION  
SINCE 1929.



### FAMIS.r.l.

VIA STAZIONE ROSSANO, 13 – 36027 ROSÀ (VI) ITALY  
TEL +39 0424 585455 – FAX +39 0424 585470  
INFO@FAMISPA.COM

R.I. DI VICENZA, C.F. & P. IVA IT03498610249  
CAPITALE SOCIALE EURO 100.000,00 INT. VERS.  
CCIAA VI: R.E.A. N° 330190

Soggetta ad attività di direzione e coord. di C.I.M.M. s.p.a.

FAMI EXPORT DEPT.  
TEL +39 0424 585455  
FAX +39 0424 585472  
EXPORT@FAMISPA.COM

[WWW.FAMISPA.COM](http://WWW.FAMISPA.COM)

STOREVAN  
TEL +39 0424 585455  
FAX +39 0424 585482  
INFO@STOREVAN.IT

[WWW.STOREVAN.COM](http://WWW.STOREVAN.COM)

Container	Capacity [L]	28
	Material	Polypropylene
	Load capacity [kg]	35
	Stackability	Yes
	Commercial height [mm]	200
	Commercial width [mm]	310
	Commercial depth [mm]	500
	Overall height [mm]	200
	Overall width [mm]	310
	Overall depth [mm]	500
	Bottom depth [mm]	443
	Measure	4
	Useful height [mm]	183
	Useful width [mm]	282
	Useful depth [mm]	425
	Colour	Darkgrey
Bottom	Ribbed	
Quantity [NR]	20	
Sales specifications	Multiple order [NR]	1
	Packaging type	Wooden pallet
	Packaging width [mm]	1800
	Packaging depth [mm]	510
	Packaging height [mm]	1010
	Gross weight [kg]	74
	Wood weight [kg]	6,6
	Plastic weight [kg]	0,197
	Packaging volume [m <sup>3</sup> ]	0,9272

Tolerances: dimensions  $\pm 2\%$  weights  $\pm 5\%$ 

INNOVATION  
SINCE 1929.

**FAMIS.r.l.**

VIA STAZIONE ROSSANO, 13 – 36027 ROSÀ (VI) ITALY  
TEL +39 0424 585455 – FAX +39 0424 585470  
INFO@FAMISPA.COM

R.I. DI VICENZA, C.F. & P. IVA IT03498610249  
CAPITALE SOCIALE EURO 100.000,00 INT. VERS.  
CCIAA VI: R.E.A. N° 330190

Soggetta ad attività di direzione e coord. di C.I.M.M. s.p.a.

FAMI EXPORT DEPT.  
TEL +39 0424 585455  
FAX +39 0424 585472  
EXPORT@FAMISPA.COM

[WWW.FAMISPA.COM](http://WWW.FAMISPA.COM)

**STOREVAN**  
TEL +39 0424 585455  
FAX +39 0424 585482  
INFO@STOREVAN.IT

[WWW.STOREVAN.COM](http://WWW.STOREVAN.COM)