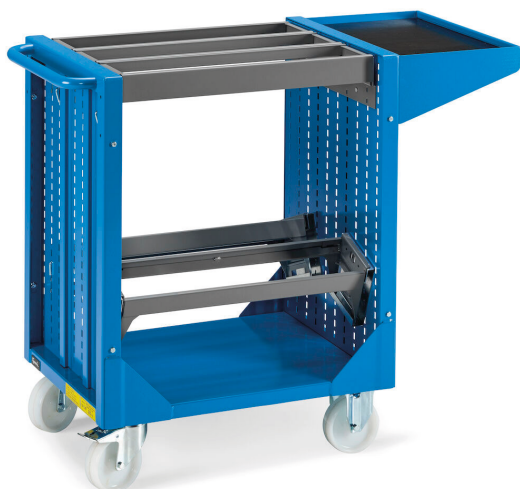


## WHEELED TOOL-HOLDER TROLLEY



The photo is used only for illustrative and non-exhaustive purpose

ART.	EAN	W [mm]	D [mm]	H [mm]	Net weight [kg]
FCNF1001051	8057711395194	1064	512	892	45

Dimensions	Overall height [mm]	892
	Overall width [mm]	1064
	Overall depth [mm]	512

Property	Colour	Blue + Dark grey
	RAL	5012+7000
	Frames [NR]	3
	Painting	Electrophoresis

Tolerances: dimensions  $\pm 2\%$  | weights  $\pm 5\%$



INNOVATION  
SINCE 1929.



Company certificated ISO 9001

### FAMIS.r.l.

VIA STAZIONE ROSSANO, 13 – 36027 ROSÀ (VI) ITALY  
 TEL +39 0424 585455 – FAX +39 0424 585470  
 INFO@FAMISPA.COM  
 R.I. DI VICENZA, C.F. & P. IVA IT03498610249  
 CAPITALE SOCIALE EURO 100.000,00 INT. VERS.  
 CCIAA VI: R.E.A. N° 330190

Soggetta ad attività di direzione e coord. di C.I.M.M. S.p.A.

FAMI EXPORT DEPT.  
 TEL +39 0424 585455  
 FAX +39 0424 585472  
 EXPORT@FAMISPA.COM

[WWW.FAMISPA.COM](http://WWW.FAMISPA.COM)

STOREVAN  
 TEL +39 0424 585455  
 FAX +39 0424 585482  
 INFO@STOREVAN.IT

[WWW.STOREVAN.COM](http://WWW.STOREVAN.COM)

Trolley	Pitch [mm]	50x25
	Load capacity [kg]	500
	Commercial height [mm]	737
	Commercial width [mm]	758
	Commercial depth [mm]	512
	Hole dimensions [mm]	7x15
	Overall height [mm]	737
	Overall width [mm]	758
	Overall depth [mm]	512
	Colour	Blue
	Handles [NR]	1
	RAL	5012
	Painting	Electrophoresis
Quantity [NR]	1	
Shelf	Load capacity [kg]	15
	Commercial height [mm]	150
	Commercial width [mm]	489
	Commercial depth [mm]	306
	Overall height [mm]	150
	Overall width [mm]	489
	Overall depth [mm]	306
	Useful width [mm]	485
	Useful depth [mm]	297
	Colour	Blue
	Fixing	Included
	RAL	5012
	Painting	Electrophoresis
Quantity [NR]	1	
Mat	Material	SBR rubber
	Commercial height [mm]	1,5
	Commercial width [mm]	485
	Commercial depth [mm]	300
	Overall height [mm]	1,5
	Overall width [mm]	485
	Overall depth [mm]	300
	Colour	Black
Quantity [NR]	1	

Tolerances: dimensions  $\pm 2\%$ , weights  $\pm 5\%$ 

INNOVATION  
SINCE 1929.



Company certificated ISO 9001

#### FAMIS.r.l.

VIA STAZIONE ROSSANO, 13 – 36027 ROSÀ (VI) ITALY  
 TEL +39 0424 585455 – FAX +39 0424 585470  
 INFO@FAMISPA.COM  
 R.I. DI VICENZA, C.F. & P. IVA IT03498610249  
 CAPITALE SOCIALE EURO 100.000,00 INT. VERS.  
 CCIAA VI: R.E.A. N° 330190  
 Soggetta ad attività di direzione e coord. di C.I.M.M. S.p.A.

FAMI EXPORT DEPT.  
 TEL +39 0424 585455  
 FAX +39 0424 585472  
 EXPORT@FAMISPA.COM

[WWW.FAMISPA.COM](http://WWW.FAMISPA.COM)

STOREVAN  
 TEL +39 0424 585455  
 FAX +39 0424 585482  
 INFO@STOREVAN.IT

[WWW.STOREVAN.COM](http://WWW.STOREVAN.COM)

<b>Frame</b>	Pitch [mm]	148
	Load capacity [kg]	150
	Commercial height [mm]	68
	Commercial width [mm]	584
	Commercial depth [mm]	444
	Width [EH]	36
	Depth [EH]	27
	Overall height [mm]	68
	Overall width [mm]	584
	Overall depth [mm]	444
	Colour	Darkgrey
	RAL	7000
	Compartments [NR]	3
	Painting	Electrophoresis
Quantity [NR]	1	

<b>Frame</b>	Load capacity [kg]	50
	Commercial height [mm]	146
	Commercial width [mm]	584
	Commercial depth [mm]	140
	Overall height [mm]	146
	Overall width [mm]	584
	Overall depth [mm]	140
	Colour	Darkgrey
	RAL	7000
	Compartments [NR]	1
	Painting	Electrophoresis
	Quantity [NR]	2

<b>Pair of supports</b>	Commercial height [mm]	112
	Commercial width [mm]	15
	Commercial depth [mm]	430
	Overall height [mm]	112
	Overall width [mm]	15
	Overall depth [mm]	430
	Colour	Darkgrey
	Fixing	Included
	Orientation	Horizontal
	RAL	7000
	Painting	Electrophoresis
	Quantity [NR]	1

Tolerances: dimensions  $\pm 2\%$ , weights  $\pm 5\%$ 

INNOVATION  
SINCE 1929.



Company certificated ISO 9001

**FAMIS.r.l.**

VIA STAZIONE ROSSANO, 13 – 36027 ROSÀ (VI) ITALY  
 TEL +39 0424 585455 – FAX +39 0424 585470  
 INFO@FAMISPA.COM  
 R.I. DI VICENZA, C.F. & P. IVA IT03498610249  
 CAPITALE SOCIALE EURO 100.000,00 INT. VERS.  
 CCIAA VI: R.E.A. N° 330190  
 Soggetta ad attività di direzione e coord. di C.I.M.M. S.p.A.

FAMI EXPORT DEPT.  
 TEL +39 0424 585455  
 FAX +39 0424 585472  
 EXPORT@FAMISPA.COM

[WWW.FAMISPA.COM](http://WWW.FAMISPA.COM)

**STOREVAN**  
 TEL +39 0424 585455  
 FAX +39 0424 585482  
 INFO@STOREVAN.IT

[WWW.STOREVAN.COM](http://WWW.STOREVAN.COM)

<b>Pair of supports</b>	<b>Finish</b>	Galvanised
	<b>Commercial height [mm]</b>	150
	<b>Commercial width [mm]</b>	30
	<b>Commercial depth [mm]</b>	140
	<b>Overall height [mm]</b>	150
	<b>Overall width [mm]</b>	30
	<b>Overall depth [mm]</b>	140
	<b>Fixing</b>	Included
	<b>Orientation</b>	Inclined
<b>Quantity [NR]</b>	2	

<b>Fixed wheel</b>	<b>Material</b>	Nylon
	<b>Load capacity [kg]</b>	275
	<b>4 Wheels set load capacity [kg]</b>	825
	<b>Commercial height [mm]</b>	155
	<b>Commercial width [mm]</b>	125
	<b>Commercial depth [mm]</b>	85
	<b>Diameter [mm]</b>	125
	<b>Overall height [mm]</b>	155
	<b>Overall width [mm]</b>	125
	<b>Overall depth [mm]</b>	85
	<b>Colour</b>	White
	<b>Quantity [NR]</b>	2

<b>Swivel wheel with brake</b>	<b>Material</b>	Nylon
	<b>Load capacity [kg]</b>	275
	<b>4 Wheels set load capacity [kg]</b>	825
	<b>Commercial height [mm]</b>	155
	<b>Commercial width [mm]</b>	176
	<b>Commercial depth [mm]</b>	85
	<b>Diameter [mm]</b>	125
	<b>Overall height [mm]</b>	155
	<b>Overall width [mm]</b>	176
	<b>Overall depth [mm]</b>	85
	<b>Colour</b>	White
	<b>Quantity [NR]</b>	2

Tolerances: dimensions  $\pm 2\%$ , weights  $\pm 5\%$ 

**INNOVATION**  
SINCE 1929.



Company certificated ISO 9001

**FAMIS.r.l.**

VIA STAZIONE ROSSANO, 13 – 36027 ROSÀ (VI) ITALY  
TEL +39 0424 585455 – FAX +39 0424 585470  
INFO@FAMISPA.COM  
R.I. DI VICENZA, C.F. & P. IVA IT03498610249  
CAPITALE SOCIALE EURO 100.000,00 INT. VERS.  
CCIAA VI: R.E.A. N° 330190

Soggetta ad attività di direzione e coord. di C.I.M.M. S.p.A.

FAMI EXPORT DEPT.  
TEL +39 0424 585455  
FAX +39 0424 585472  
EXPORT@FAMISPA.COM

[WWW.FAMISPA.COM](http://WWW.FAMISPA.COM)

**STOREVAN**  
TEL +39 0424 585455  
FAX +39 0424 585482  
INFO@STOREVAN.IT

[WWW.STOREVAN.COM](http://WWW.STOREVAN.COM)

<b>Sales specifications</b>	<b>Multiple order [NR]</b>	1
	<b>Packaging type</b>	Wooden pallet
	<b>Packaging width [mm]</b>	660
	<b>Packaging depth [mm]</b>	440
	<b>Packaging height [mm]</b>	210
	<b>Gross weight [kg]</b>	54
	<b>Cardboard weight [kg]</b>	3,3
	<b>Wood weight [kg]</b>	5,6
	<b>Plastic weight [kg]</b>	0,030
	<b>Packaging volume [m<sup>3</sup>]</b>	0,0610

Tolerances: dimensions  $\pm 2\%$  | weights  $\pm 5\%$ 

**INNOVATION**  
SINCE 1929.



Company certificated ISO 9001

**FAMIS.r.l.**

VIA STAZIONE ROSSANO, 13 – 36027 ROSÀ (VI) ITALY  
 TEL +39 0424 585455 – FAX +39 0424 585470  
 INFO@FAMISPA.COM  
 R.I. DI VICENZA, C.F. & P. IVA IT03498610249  
 CAPITALE SOCIALE EURO 100.000,00 INT. VERS.  
 CCIAA VI: R.E.A. N° 330190

Soggetta ad attività di direzione e coord. di C.I.M.M. S.p.A.

FAMI EXPORT DEPT.  
 TEL +39 0424 585455  
 FAX +39 0424 585472  
 EXPORT@FAMISPA.COM

[WWW.FAMISPA.COM](http://WWW.FAMISPA.COM)

**STOREVAN**  
 TEL +39 0424 585455  
 FAX +39 0424 585482  
 INFO@STOREVAN.IT

[WWW.STOREVAN.COM](http://WWW.STOREVAN.COM)