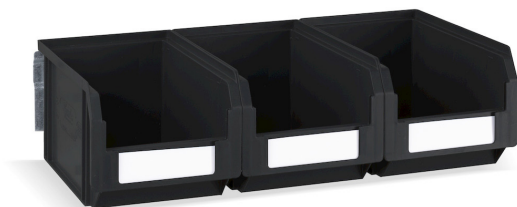


BAR MOUNT WITH 3 PICKING BOX CONTAINERS SIZE 2



The photo is used only for illustrative and non-exhaustive purpose

ART.	EAN	W [mm]	D [mm]	H [mm]	Net weight [kg]
FBLIT014000	8057711390236	447	233	123	1,1

Dimensions	Overall height [mm]	123
	Overall width [mm]	447
	Overall depth [mm]	233

Technical data	Finish	Galvanised
----------------	--------	------------

Bar	Finish	Galvanised
	Commercial height [mm]	85
	Commercial width [mm]	445
	Commercial depth [mm]	9
	Overall height [mm]	85
	Overall width [mm]	445
	Overall depth [mm]	9
	Quantity [NR]	1

Tolerances: dimensions $\pm 2\%$ | weights $\pm 5\%$



INNOVATION
SINCE 1929.



FAMIS.r.l.

VIA STAZIONE ROSSANO, 13 – 36027 ROSÀ (VI) ITALY
TEL +39 0424 585455 – FAX +39 0424 585470
INFO@FAMISPA.COM

R.I. DI VICENZA, C.F. & P. IVA IT03498610249
CAPITALE SOCIALE EURO 100.000,00 INT. VERS.
CCIAA VI: R.E.A. N° 330190

Soggetta ad attività di direzione e coord. di C.I.M.M. s.p.a.

FAMI EXPORT DEPT.
TEL +39 0424 585455
FAX +39 0424 585472
EXPORT@FAMISPA.COM

WWW.FAMISPA.COM

STOREVAN
TEL +39 0424 585455
FAX +39 0424 585482
INFO@STOREVAN.IT

WWW.STOREVAN.COM

Container	Capacity [L]	3,8
	Material	Conductive polypropylene
	Load capacity [kg]	5
	Stackability	Yes
	Commercial height [mm]	125
	Commercial width [mm]	150
	Commercial depth [mm]	230
	Overall height [mm]	125
	Overall width [mm]	150
	Overall depth [mm]	230
	Bottom depth [mm]	202
	Measure	2
	Useful height [mm]	110
	Useful width [mm]	127
	Useful depth [mm]	191
	Colour	Black
Bottom	Solid	
Quantity [NR]	3	
Sales specifications	Multiple order [NR]	1
	Packaging type	Plastic bag
	Packaging width [mm]	600
	Packaging depth [mm]	300
	Packaging height [mm]	140
	Gross weight [kg]	1,2
	Plastic weight [kg]	0,050
	Packaging volume [m ³]	0,0252

Tolerances: dimensions $\pm 2\%$ | weights $\pm 5\%$ 

INNOVATION
SINCE 1929.

**FAMIS.r.l.**

VIA STAZIONE ROSSANO, 13 – 36027 ROSÀ (VI) ITALY
TEL +39 0424 585455 – FAX +39 0424 585470
INFO@FAMISPA.COM

R.I. DI VICENZA, C.F. & P. IVA IT03498610249
CAPITALE SOCIALE EURO 100.000,00 INT. VERS.
CCIAA VI: R.E.A. N° 330190

Soggetta ad attività di direzione e coord. di C.I.M.M. s.p.a.

FAMI EXPORT DEPT.
TEL +39 0424 585455
FAX +39 0424 585472
EXPORT@FAMISPA.COM

WWW.FAMISPA.COM

STOREVAN
TEL +39 0424 585455
FAX +39 0424 585482
INFO@STOREVAN.IT

WWW.STOREVAN.COM