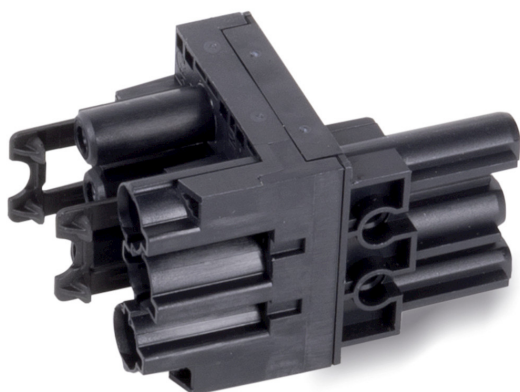


## WIELAND H-SHAPED DISTRIBUTION BLOCK WITH 2 OUTPUTS



The photo is used only for illustrative and non-exhaustive purpose

ART.	EAN	W [mm]	D [mm]	H [mm]	Net weight [kg]
FBLET015007	8057711390045	60	35	35	0,034

Dimensions	Overall height [mm]	35
	Overall width [mm]	60
	Overall depth [mm]	35

Property	Colour	Black
----------	--------	-------

Sales specifications	Multiple order [NR]	1
	Packaging type	PE tubular film
	Packaging width [mm]	60
	Packaging depth [mm]	35
	Packaging height [mm]	35
	Gross weight [kg]	0,042
	Plastic weight [kg]	0,008
	Packaging volume [m <sup>3</sup> ]	0,0001

Tolerances: dimensions ±2% | weights ±5%



INNOVATION  
SINCE 1929.



Company certificated ISO 9001

### FAMIS.r.l.

VIA STAZIONE ROSSANO, 13 – 36027 ROSÀ (VI) ITALY  
TEL +39 0424 585455 – FAX +39 0424 585470  
INFO@FAMISPA.COM  
R.I. DI VICENZA, C.F. & P. IVA IT03498610249  
CAPITALE SOCIALE EURO 100.000,00 INT. VERS.  
CCIAA VI: R.E.A. N° 330190  
Soggetta ad attività di direzione e coord. di C.I.M.M. S.p.A.

FAMI EXPORT DEPT.  
TEL +39 0424 585455  
FAX +39 0424 585472  
EXPORT@FAMISPA.COM

[WWW.FAMISPA.COM](http://WWW.FAMISPA.COM)

STOREVAN  
TEL +39 0424 585455  
FAX +39 0424 585482  
INFO@STOREVAN.IT

[WWW.STOREVAN.COM](http://WWW.STOREVAN.COM)