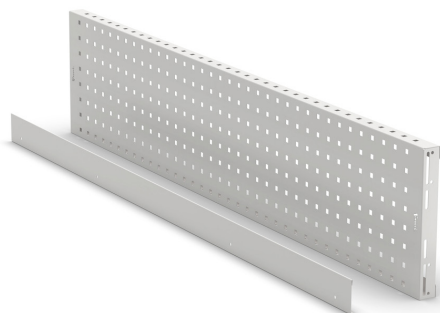


KIT WITH 3 PERFORATED PANELS/SHELVES WITH 2 BOX-STOP EDGES



The photo is used only for illustrative and non-exhaustive purpose

ART.	EAN	W [mm]	D [mm]	H [mm]	Net weight [kg]
FBL76310308	8057711394944	1438	40	304	16,7

Dimensions	Overall height [mm]	304
	Overall width [mm]	1438
	Overall depth [mm]	70

Property	Colour	Light grey
	RAL	7035
	Box-stop edges [NR]	2
	Fixing	Included
	Painting	Powder

Tolerances: dimensions $\pm 2\%$ | weights $\pm 5\%$



INNOVATION
SINCE 1929.



Company certificated ISO 9001

FAMIS.r.l.

VIA STAZIONE ROSSANO, 13 – 36027 ROSÀ (VI) ITALY
TEL +39 0424 585455 – FAX +39 0424 585470
INFO@FAMISPA.COM

R.I. DI VICENZA, C.F. & P. IVA IT03498610249
CAPITALE SOCIALE EURO 100.000,00 INT. VERS.
CCIAA VI: R.E.A. N° 330190

Soggetta ad attività di direzione e coord. di C.I.M.M. S.p.A.

FAMI EXPORT DEPT.
TEL +39 0424 585455
FAX +39 0424 585472
EXPORT@FAMISPA.COM

WWW.FAMISPA.COM

STOREVAN
TEL +39 0424 585455
FAX +39 0424 585482
INFO@STOREVAN.IT

WWW.STOREVAN.COM

Panel	Pitch [mm]	38
	Load capacity [kg]	20-25
	Commercial height [mm]	304
	Commercial width [mm]	1438
	Commercial depth [mm]	40
	Hole dimensions [mm]	10x10
	Overall height [mm]	304
	Overall width [mm]	1438
	Overall depth [mm]	40
	Colour	Light grey
	Fixing	Included
	Drilling	Yes
	RAL	7035
	Painting	Powder
Quantity [NR]	3	
Sales specifications	Multiple order [NR]	1
	Packaging type	Cardboard box
	Packaging width [mm]	1450
	Packaging depth [mm]	320
	Packaging height [mm]	135
	Gross weight [kg]	17,4
	Cardboard weight [kg]	0,678
	Plastic weight [kg]	0,015
	Packaging volume [m³]	0,0626

Tolerances: dimensions $\pm 2\%$, weights $\pm 5\%$ 

INNOVATION
SINCE 1929.



Company certificated ISO 9001

FAMIS.r.l.

VIA STAZIONE ROSSANO, 13 – 36027 ROSÀ (VI) ITALY
 TEL +39 0424 585455 – FAX +39 0424 585470
 INFO@FAMISPA.COM
 R.I. DI VICENZA, C.F. & P. IVA IT03498610249
 CAPITALE SOCIALE EURO 100.000,00 INT. VERS.
 CCIAA VI: R.E.A. N° 330190
 Soggetta ad attività di direzione e coord. di C.I.M.M. S.p.A.

FAMI EXPORT DEPT.
 TEL +39 0424 585455
 FAX +39 0424 585472
 EXPORT@FAMISPA.COM

WWW.FAMISPA.COM

STOREVAN
 TEL +39 0424 585455
 FAX +39 0424 585482
 INFO@STOREVAN.IT

WWW.STOREVAN.COM