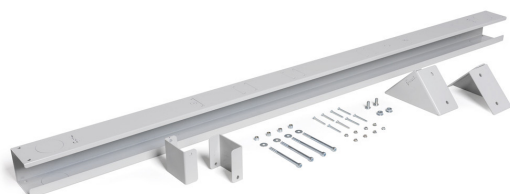


ADDITIONAL POWER STRIP FRAME WITH END CAPS AND CORNER ELEMENTS



The photo is used only for illustrative and non-exhaustive purpose

ART.	EAN	W [mm]	D [mm]	H [mm]	Net weight [kg]
FBL46650008	8057711059355	1499	130	208	6,0

Dimensions	Overall height [mm]	208
	Overall width [mm]	1499
	Overall depth [mm]	130

Property	Colour	Lightgrey
	RAL	7035
	Fixing	Included
	Painting	Electrophoresis

Sales specifications	Multiple order [NR]	1
	Packaging type	Cardboard box
	Packaging width [mm]	1315
	Packaging depth [mm]	130
	Packaging height [mm]	120
	Gross weight [kg]	6,7
	Cardboard weight [kg]	0,665
	Plastic weight [kg]	0,002
	Packaging volume [m ³]	0,0205

Tolerances: dimensions ±2% | weights ±5%



INNOVATION
SINCE 1929.



Company certificated ISO 9001

FAMIS.r.l.

VIA STAZIONE ROSSANO, 13 – 36027 ROSÀ (VI) ITALY
TEL +39 0424 585455 – FAX +39 0424 585470
INFO@FAMISPA.COM
R.I. DI VICENZA, C.F. & P. IVA IT03498610249
CAPITALE SOCIALE EURO 100.000,00 INT. VERS.
CCIAA VI: R.E.A. N° 330190

Soggetta ad attività di direzione e coord. di C.I.M.M. S.p.A.

FAMI EXPORT DEPT.
TEL +39 0424 585455
FAX +39 0424 585472
EXPORT@FAMISPA.COM

WWW.FAMISPA.COM

STOREVAN
TEL +39 0424 585455
FAX +39 0424 585482
INFO@STOREVAN.IT

WWW.STOREVAN.COM