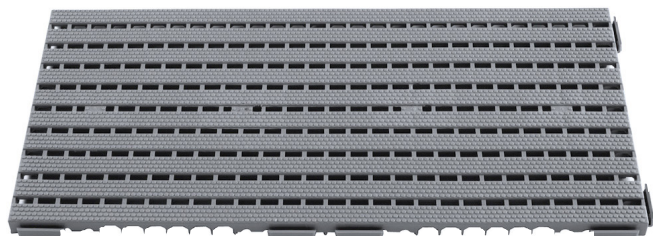


NON-SLIP PERFORATED POLYETHYLENE MAT



The photo is used only for illustrative and non-exhaustive purpose

| ART. | EAN | W [mm] | D [mm] | H [mm] | Net weight [kg] |
|-----------------|---------------|--------|--------|--------|-----------------|
| FAXSMTA08004001 | 8057711393671 | 800 | 400 | 25 | 2,0 |

| | | |
|------------|---------------------|-----|
| Dimensions | Overall height [mm] | 25 |
| | Overall width [mm] | 800 |
| | Overall depth [mm] | 400 |

| | | |
|----------------|----------|--------------|
| Technical data | Material | Polyethylene |
|----------------|----------|--------------|

| | | |
|----------|----------|-----------|
| Property | Colour | Dark grey |
| | Drilling | Yes |

| | | |
|------------------------------------|-----------------------|-------------------|
| Sales specifications | Minimum order [NR] | 1 |
| | Multiple order [NR] | 1 |
| | Packaging type | Without packaging |
| | Packaging width [mm] | 800 |
| | Packaging depth [mm] | 400 |
| | Packaging height [mm] | 25 |
| | Gross weight [kg] | 2,0 |
| Packaging volume [m ³] | 0,0080 | |

Tolerances: dimensions $\pm 2\%$, weights $\pm 5\%$



INNOVATION
SINCE 1929.



FAMIS.r.l.

VIA STAZIONE ROSSANO, 13 – 36027 ROSÀ (VI) ITALY
TEL +39 0424 585455 – FAX +39 0424 585470
INFO@FAMISPA.COM

R.I. DI VICENZA, C.F. & P. IVA IT03498610249
CAPITALE SOCIALE EURO 100.000,00 INT. VERS.
CCIAA VI: R.E.A. N° 330190

Soggetta ad attività di direzione e coord. di C.I.M.M. s.p.a.

FAMI EXPORT DEPT.
TEL +39 0424 585455
FAX +39 0424 585472
EXPORT@FAMISPA.COM

WWW.FAMISPA.COM

STOREVAN
TEL +39 0424 585455
FAX +39 0424 585482
INFO@STOREVAN.IT

WWW.STOREVAN.COM