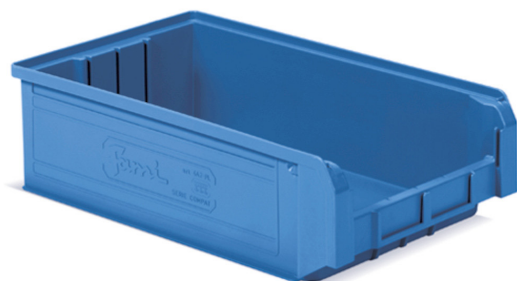


PICKING BOX POLYPROPYLENE CONTAINER SIZE 4A2



The photo is used only for illustrative and non-exhaustive purpose

ART.	EAN	W [mm]	D [mm]	H [mm]	Net weight [kg]
FAXPBC4A2B05104	8057711393442	310	500	145	1,2

Dimensions	Overall height [mm]	145
	Overall width [mm]	310
	Overall depth [mm]	500
	Bottom depth [mm]	450
	Measure	4A2
	Useful height [mm]	134
	Useful width [mm]	282
	Useful depth [mm]	425

Technical data	Capacity [L]	20
	Material	Polypropylene
	Load capacity [kg]	30
	Stackability	Yes

Property	Colour	Blue
	Bottom	Ribbed

Tolerances: dimensions $\pm 2\%$, weights $\pm 5\%$



INNOVATION
SINCE 1929.



FAMIS.r.l.

VIA STAZIONE ROSSANO, 13 – 36027 ROSÀ (VI) ITALY
TEL +39 0424 585455 – FAX +39 0424 585470
INFO@FAMISPA.COM

R.I. DI VICENZA, C.F. & P. IVA IT03498610249
CAPITALE SOCIALE EURO 100.000,00 INT. VERS.
CCIAA VI: R.E.A. N° 330190

Soggetta ad attività di direzione e coord. di C.I.M.M. s.p.a.

FAMI EXPORT DEPT.
TEL +39 0424 585455
FAX +39 0424 585472
EXPORT@FAMISPA.COM

WWW.FAMISPA.COM

STOREVAN
TEL +39 0424 585455
FAX +39 0424 585482
INFO@STOREVAN.IT

WWW.STOREVAN.COM

Sales specifications	Minimum order [NR]	14
	Multiple order [NR]	14
	Packaging type	Cardboard box
	Packaging width [mm]	670
	Packaging depth [mm]	520
	Packaging height [mm]	970
	Gross weight [kg]	1,3
	Cardboard weight [kg]	0,136
	Packaging volume [m ³]	0,0241

Tolerances: dimensions $\pm 2\%$ | weights $\pm 5\%$


INNOVATION
SINCE 1929.

**FAMIS.r.l.**

VIA STAZIONE ROSSANO, 13 – 36027 ROSÀ (VI) ITALY
TEL +39 0424 585455 – FAX +39 0424 585470
INFO@FAMISPA.COM

R.I. DI VICENZA, C.F. & P. IVA IT03498610249
CAPITALE SOCIALE EURO 100.000,00 INT. VERS.
CCIAA VI: R.E.A. N° 330190

Soggetta ad attività di direzione e coord. di C.I.M.M. s.p.a.

FAMI EXPORT DEPT.
TEL +39 0424 585455
FAX +39 0424 585472
EXPORT@FAMISPA.COM

WWW.FAMISPA.COM

STOREVAN
TEL +39 0424 585455
FAX +39 0424 585482
INFO@STOREVAN.IT

WWW.STOREVAN.COM