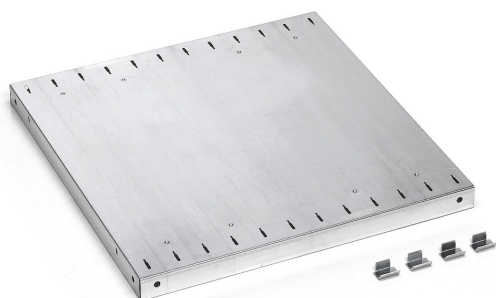


## KIT WITH 3 SLOTTED SHELVES



The photo is used only for illustrative and non-exhaustive purpose

ART.	EAN	W [mm]	D [mm]	H [mm]	Net weight [kg]
FAC9911030099	8057711391943	484	500	35	5,5

Dimensions	Overall height [mm]	35
	Overall width [mm]	484
	Overall depth [mm]	500

Technical data	Finish	Galvanised
----------------	--------	------------

Property	Fixing	Included
----------	--------	----------

Shelf	Finish	Galvanised
	Pitch [mm]	40,5
	Load capacity [kg]	120
	Commercial height [mm]	35
	Commercial width [mm]	484
	Commercial depth [mm]	500
	Overall height [mm]	35
	Overall width [mm]	484
	Overall depth [mm]	500
	Slots	Yes
	Fixing	Included
	Quantity [NR]	3

Tolerances: dimensions  $\pm 2\%$ , weights  $\pm 5\%$



INNOVATION  
SINCE 1929.



Company certificated ISO 9001

### FAMIS.r.l.

VIA STAZIONE ROSSANO, 13 – 36027 ROSÀ (VI) ITALY  
TEL +39 0424 585455 – FAX +39 0424 585470  
INFO@FAMISPA.COM

R.I. DI VICENZA, C.F. & P. IVA IT03498610249  
CAPITALE SOCIALE EURO 100.000,00 INT. VERS.  
CCIAA VI: R.E.A. N° 330190

Soggetta ad attività di direzione e coord. di C.I.M.M. S.p.A.

FAMI EXPORT DEPT.  
TEL +39 0424 585455  
FAX +39 0424 585472  
EXPORT@FAMISPA.COM

[WWW.FAMISPA.COM](http://WWW.FAMISPA.COM)

STOREVAN  
TEL +39 0424 585455  
FAX +39 0424 585482  
INFO@STOREVAN.IT

[WWW.STOREVAN.COM](http://WWW.STOREVAN.COM)

<b>Sales specifications</b>	<b>Packaging [NR]</b>	3
	<b>Multiple order [NR]</b>	1
	<b>Packaging type</b>	Cardboard box
	<b>Packaging width [mm]</b>	515
	<b>Packaging depth [mm]</b>	505
	<b>Packaging height [mm]</b>	150
	<b>Gross weight [kg]</b>	5,9
	<b>Cardboard weight [kg]</b>	0,381
	<b>Plastic weight [kg]</b>	0,006
	<b>Packaging volume [m<sup>3</sup>]</b>	0,0390
<b>Certifications</b>	<b>Declaration</b>	TÜV-GS

Tolerances:dimensions±2%|weights±5%



**INNOVATION**  
SINCE 1929.



Company certificated ISO 9001

**FAMIS.r.l.**

VIA STAZIONE ROSSANO, 13 – 36027 ROSÀ (VI) ITALY  
TEL +39 0424 585455 – FAX +39 0424 585470  
INFO@FAMISPA.COM  
R.I. DI VICENZA, C.F. & P. IVA IT03498610249  
CAPITALE SOCIALE EURO 100.000,00 INT. VERS.  
CCIAA VI: R.E.A. N° 330190

Soggetta ad attività di direzione e coord. di C.I.M.M. S.p.A.

FAMI EXPORT DEPT.  
TEL +39 0424 585455  
FAX +39 0424 585472  
EXPORT@FAMISPA.COM

[WWW.FAMISPA.COM](http://WWW.FAMISPA.COM)

**STOREVAN**  
TEL +39 0424 585455  
FAX +39 0424 585482  
INFO@STOREVAN.IT

[WWW.STOREVAN.COM](http://WWW.STOREVAN.COM)