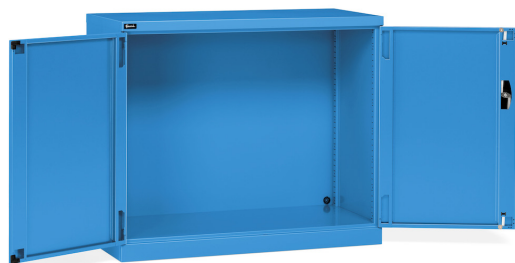


CABINET WITH HINGED DOORS



The photo is used only for illustrative and non-exhaustive purpose

ART.	EAN	W [mm]	D [mm]	H [mm]	Net weight [kg]
FAA1520C00004	8057711391721	1193	555	1000	36

Dimensions	Width [EH]	64
	Depth [EH]	27
	Overall height [mm]	1000
	Overall width [mm]	1193
	Overall depth [mm]	567

Property	Colour	Blue
	RAL	5012
	Painting	Powder

Tolerances: dimensions $\pm 2\%$ | weights $\pm 5\%$



INNOVATION
SINCE 1929.



Company certificated ISO 9001

FAMIS.r.l.

VIA STAZIONE ROSSANO, 13 – 36027 ROSÀ (VI) ITALY
TEL +39 0424 585455 – FAX +39 0424 585470
INFO@FAMISPA.COM

R.I. DI VICENZA, C.F. & P. IVA IT03498610249
CAPITALE SOCIALE EURO 100.000,00 INT. VERS.
CCIAA VI: R.E.A. N° 330190

Soggetta ad attività di direzione e coord. di C.I.M.M. S.p.A.

FAMI EXPORT DEPT.
TEL +39 0424 585455
FAX +39 0424 585472
EXPORT@FAMISPA.COM

WWW.FAMISPA.COM

STOREVAN
TEL +39 0424 585455
FAX +39 0424 585482
INFO@STOREVAN.IT

WWW.STOREVAN.COM

Empty cabinet	Load capacity [kg]	800
	Lid load capacity [kg]	80
	Base load capacity [kg]	100
	Commercial height [mm]	1000
	Commercial width [mm]	1193
	Commercial depth [mm]	555
	Width [EH]	64
	Depth [EH]	27
	Overall height [mm]	1000
	Overall width [mm]	1193
	Overall depth [mm]	555
	Useful height [mm]	910
	Insertion useful height [mm]	855
	Useful width [mm]	1165
	Useful depth [mm]	500
	Colour	Blue
	RAL	5012
Painting	Powder	
Quantity [NR]	1	

Door pair	Commercial height [mm]	880
	Commercial width [mm]	1189
	Commercial depth [mm]	42
	Width [EH]	64
	Overall height [mm]	880
	Overall width [mm]	1189
	Overall depth [mm]	42
	Opening	RH
	Closure	Key
	Closure code	C0
	Colour	Blue
	Closure description	All the keys will have a different numbering - The lock serial number will be a random figure between 1 and 19
	Slots	No
	Fixing	Included
	Handles [NR]	1
	RAL	5012
	Locks [NR]	1
Painting	Powder	
Quantity [NR]	1	

Tolerances: dimensions $\pm 2\%$ | weights $\pm 5\%$ 

INNOVATION
SINCE 1929.



Company certificated ISO 9001

FAMIS.r.l.

VIA STAZIONE ROSSANO, 13 – 36027 ROSÀ (VI) ITALY
 TEL +39 0424 585455 – FAX +39 0424 585470
 INFO@FAMISPA.COM
 R.I. DI VICENZA, C.F. & P. IVA IT03498610249
 CAPITALE SOCIALE EURO 100.000,00 INT. VERS.
 CCIAA VI: R.E.A. N° 330190
 Soggetta ad attività di direzione e coord. di C.I.M.M. S.p.A.

FAMI EXPORT DEPT.
 TEL +39 0424 585455
 FAX +39 0424 585472
 EXPORT@FAMISPA.COM

WWW.FAMISPA.COM

STOREVAN
 TEL +39 0424 585455
 FAX +39 0424 585482
 INFO@STOREVAN.IT

WWW.STOREVAN.COM

Sales specifications	Multiple order [NR]	1
	Packaging type	Wooden pallet
	Packaging width [mm]	1260
	Packaging depth [mm]	620
	Packaging height [mm]	1145
	Gross weight [kg]	42
	Wood weight [kg]	5,5
	Plastic weight [kg]	0,133
	Polystyrene weight [kg]	0,537
	Packaging volume [m³]	0,8945
Certifications	Declaration	TÜV-GS

Tolerances: dimensions ±2% | weights ±5%



INNOVATION
SINCE 1929.



Company certificated ISO 9001

FAMIS.r.l.

VIA STAZIONE ROSSANO, 13 – 36027 ROSÀ (VI) ITALY
TEL +39 0424 585455 – FAX +39 0424 585470
INFO@FAMISPA.COM

R.I. DI VICENZA, C.F. & P. IVA IT03498610249
CAPITALE SOCIALE EURO 100.000,00 INT. VERS.
CCIAA VI: R.E.A. N° 330190

Soggetta ad attività di direzione e coord. di C.I.M.M. S.p.A.

FAMI EXPORT DEPT.
TEL +39 0424 585455
FAX +39 0424 585472
EXPORT@FAMISPA.COM

WWW.FAMISPA.COM

STOREVAN
TEL +39 0424 585455
FAX +39 0424 585482
INFO@STOREVAN.IT

WWW.STOREVAN.COM